

**CONNECTING PRIVATE SOLAR ENERGY
SYSTEMS AND NET METERING**

**Producing your
own energy?**

Great Decision.

Let's connect you to our smart grid.

ComEd[®]

An Exelon Company

ComEd.com/Interconnection

Our Clean Energy Future

Introduction

Today, you have more options than ever for solar energy. We will work with you to ensure your private solar energy system is safely connected to our smart grid. (You may have heard this connection process referred to as “Interconnection.”)

In this guide, you will find:

- **Helpful Tips to Consider First**
- **The Step-by-Step Connection Process**
- **How Net Metering Works**



Step-by-Step Process

Choosing, installing and connecting a private solar energy system requires proper planning. We are here to help you through the journey.



RESEARCH

- 1 Review your annual energy use and determine your energy needs.**
 - 2 Research the various types of private solar energy systems available and decide which system best meets your needs.** Your private solar energy system should be sized to meet some or all your energy needs and not produce more energy than you need annually.
 - 3 Interview and select a contractor.** Visit icc.illinois.gov/utility and select distributed generation from the drop down for a list of solar contractors.
-



APPLY

- 4 Check with your municipality** for any required approvals needed to operate your private solar energy system (e.g., ordinances, permit requirements and documentation).
- 5 Submit your Interconnection Application to ComEd** along with supporting documentation and any application fees. Apply online and find details at ComEd.com/Interconnection.
 - **ComEd will review your Interconnection Application to ensure your private solar energy system can be safely and reliably connected to the smart grid within 22 business days.**
- 6 Apply to participate in Net Metering.** If ComEd is your energy supplier, you can apply to participate in Net Metering at ComEd.com/NetMetering. If ComEd is not your energy supplier, you can participate in Net Metering by contacting and submitting an application to your energy supplier.
 - **ComEd will review your Net Metering Application within 10 business days.**

Please be sure that your applications and supporting documentation are complete to avoid delays in approving your applications.



INSTALL & OPERATE

- 7** **Install your private solar energy system** after your Interconnection Application has been approved.
- 8** **You may begin operating your private solar energy system** after receiving a signed Certificate of Completion from ComEd confirming your system has been installed and any required municipality approvals have been obtained.



RECEIVE NET METERING CREDITS

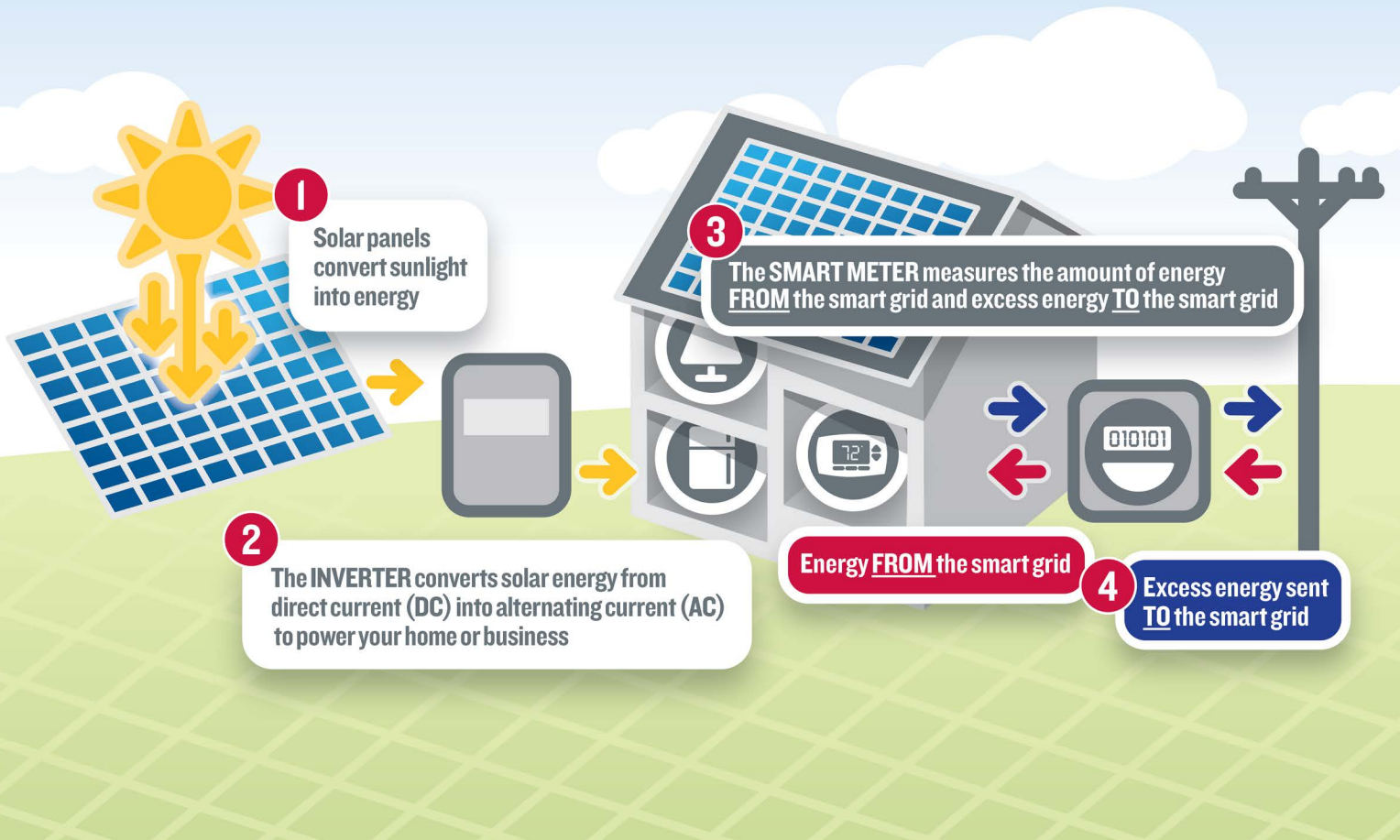
- 9** **Receive approval to participate in Net Metering** from ComEd or your energy supplier and receive credits on your energy bill when you produce more energy than you need.

Helpful Tips

- **Understand your energy use.** The private solar energy system you choose should be sized to produce some or all your energy needs.
- **The production of your private solar energy system can vary** – weather, tree cover and required maintenance can all affect how much energy you produce.
- **To ensure your private solar energy system is safely and reliably connected to the smart grid, do not operate your system without approval from ComEd and your municipality.**
- **Participate in net metering and receive credits on your energy bill when you produce more energy than you need.**

Visit [ComEd.com/Interconnection](https://www.comed.com/interconnection) for additional FAQs.

HOW NET METERING WORKS



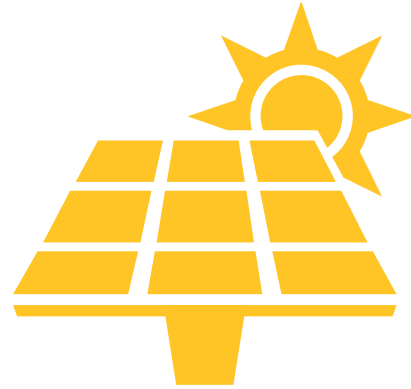
NET METERING CREDIT EXAMPLES

	Energy Produced by Solar Panels	Total Energy Used by Customer	kWh FROM the Smart Grid	Excess kWh TO the Smart Grid
Energy Produced is <u>LESS THAN</u> Energy Used	5 kWh	7 kWh	2 kWh	0 kWh
Energy Produced <u>EQUALS</u> Energy Used	5 kWh	5 kWh	0 kWh	0 kWh
Energy Produced is <u>Greater Than</u> Energy Used	5 kWh	3 kWh	0 kWh	2 kWh



We're here to help you throughout the journey.

Visit ComEd.com/Interconnection



Our clean energy future.

We have a variety of resources that can help you get your private solar energy system up and running. And we're here to help you through the journey!

For Answers to Frequently Asked Questions

ComEd.com/Interconnection
ComEd.com/NetMetering

For Questions about Connection to our Smart Grid

Email: Interconnect@ComEd.com
Phone: 630-576-8158

For Questions about Net Metering

Email: NetMetering@ComEd.com
Phone: 800-825-5436

ComEd[®]
An Exelon Company

powering lives