

**INNOVATIVE
TECHNOLOGY**



**IMPROVED
RELIABILITY**

THE SMART GRID - NOW AND IN THE FUTURE.

We are constantly working to keep pace with your changing energy demands, and we want to make life more convenient for you now, and for generations to come. The smart grid uses computer intelligence to communicate with life's modern conveniences – smart appliances, Wi-Fi thermostats, and remote-controlled lighting. As more smart energy products become available, the smart grid will enable access to the technology that makes them work.

Improving the efficiency and reliability of the electrical system is top priority for ComEd. By investing in the smart grid and integrating bold new innovation, we're able to offer you better service and more intelligent energy choices.

LEARN MORE ABOUT THE SMART GRID.

ComEd.com/SmartGrid
800-EDISON-1



powering lives



LEARN MORE ABOUT THE SMART GRID.

ComEd.com/SmartGrid
800-EDISON-1



powering lives



THE POWER OF THE SMART GRID

Where innovation meets reliability.



powering lives

EFFICIENCY AND RELIABILITY.

Everyday ComEd is preparing to meet your future energy needs. By modernizing the electric system and integrating smart technology, we are building a stronger, more reliable, smart grid that:

- Ensures fewer and shorter power outages
- Offers tools and services that help you save money
- Leaves a cleaner, greener planet for future generations

We understand that improving the efficiency, reliability and security of the electric system is critical to meeting your changing demands and providing you with smart energy choices.

Fewer and Shorter Power Outages

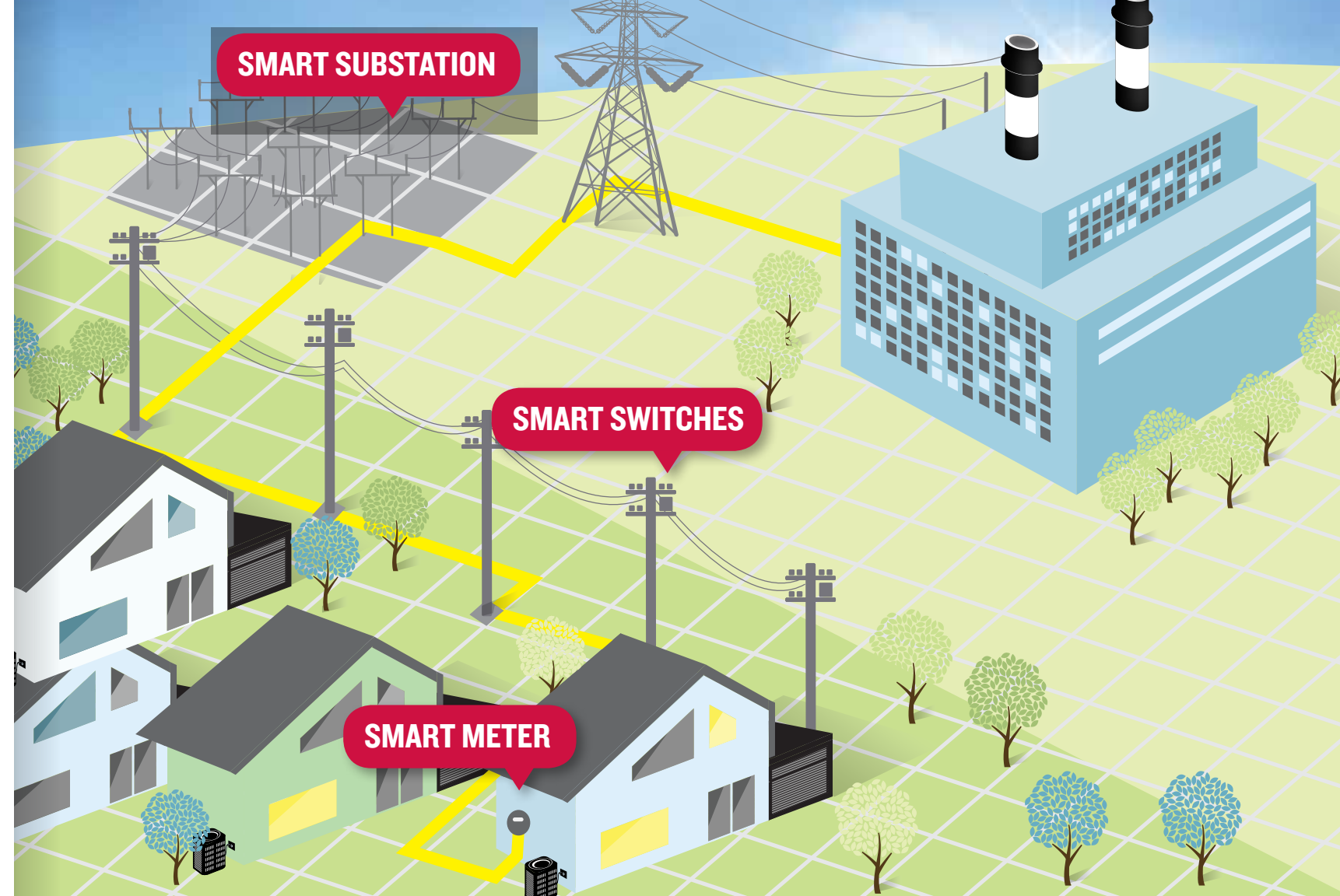
New equipment is being installed on the electric system to help reduce power outages caused by severe weather, trees and wildlife. Power lines, underground cable and utility poles are being refurbished or replaced. And, smart technology is being added to the electric system to build a smart grid to help prevent power outages and restore power more quickly when problems do occur. These are some of the many ways ComEd is providing more reliable power to you.

Tools and Programs to Help You Save

The smart grid supports devices that provide information-on-demand to help you make smarter energy choices, as well as energy management tools and programs that give you more control over your electricity use. Use this information to help manage your electric bills and save money.

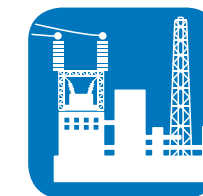
A Greener Planet for the Future

The smart grid helps create a new relationship with our planet. With system improvements and updated technology, the smart grid can help reduce dependence on fossil fuels and lower CO2 emissions. And, a smart grid can more effectively integrate renewable energy sources like wind and solar power, contributing to a cleaner, greener tomorrow.



HOW THE SMART GRID WORKS.

By integrating smart technology into the electric system, we are creating a smart grid. In the same way that today's "smart phone" technology merges the power of computers with cellular phones, smart grid technology merges the power of computers with the electric grid. Smart substations, smart switches and smart meters all work together to create a more responsive electric system.



SMART SUBSTATIONS

Smart technology is being installed to create intelligent substations. The new technology helps detect potential problems before they occur to help avoid power outages.



SMART SWITCHES

These intelligent devices isolate problems on the electric system and automatically re-route power to greatly reduce the number of people impacted by power outages.



SMART METERS

After a smart meter is installed at your home, you can enroll in optional pricing programs, and sign up to receive High-Usage Alerts and Weekly Usage Reports, to take control of your electricity usage and save.

5 substations have already been upgraded that serve approximately **100,000 customers** including O'Hare and Midway airports.

In 2014, smart switches helped avoid approximately **1.2 million** customer outages.

Over **1 million smart meters** have already been installed at homes and businesses across northern Illinois.